



**Truman State
University
Panhellenic
2020**

ΑΓΔ

ΑΣΑ

ΔΦΕ

ΔΖ

ΣΚ

ΣΣΣ

Dear Potential New Member,



Are you interested in Greek Life? Formal Recruitment is the time when you can have your questions about Greek Life answered and decide if joining a sorority is the right choice for you. Formal Recruitment is an experience in which women just like yourself have the opportunity to take a closer look at sorority life at Truman. During the Formal Recruitment process, you will be able to meet sorority members, discuss Greek Life, and start new friendships.

We encourage you to learn more about Greek Life and sign up for Formal Recruitment. If you have any questions, please do not hesitate to explore our website at panhellenic.truman.edu or e-mail us at panhellenictsu@gmail.com. Because of COVID-19, some parts of recruitment will look different than they have in the past, but we are confident that recruitment will continue to be the fun and rewarding process we have always known. If you have any questions or concerns about your well-being during the recruitment process, please contact us!.

Sincerely,

The 2020 Panhellenic Recruitment Team

Karlie, Kaitlyn, Nyja, Morgan, Kari and Alyssa



What Sorority Life at Truman is All About

Sisterhood

Although each sorority is unique and has their own values and ideals, they all possess a strong sisterhood between their members. Whether you are simply hanging out in the chapter room, in the Rec playing intramural sports, or going out to dinner with your sisters, you are creating bonds that will last a lifetime. Each chapter is made up of a diverse group of women and has something unique to offer.

***Approximately 25% of
Truman women are Greek***

Leadership

There are countless ways to get involved and take on leadership roles in a sorority. Holding an officer position, or simply being a role model are all examples of ways for you to develop your leadership and organizational skills. You have the chance to make a difference in the lives of your sisters and on Truman's campus.

***75% of sorority women
are also involved in
organizations outside of
Greek Life and 25% of them
hold leadership positions.***

Service

Philanthropy plays a large role in the lives of Truman Greeks. Not only does each sorority on campus support their own philanthropies, but they

also collectively support the Panhellenic Council's philanthropy, St. Jude Children's Research Hospital. They go far beyond this and participate in other fraternity and sorority philanthropy events, campus-wide service events, volunteer in the community, as well as team together with fraternities and other campus organizations to compete to raise the highest amount of money for the Homecoming and Greek Week philanthropies. Whether they give monetary donations or spend time volunteering, Greeks are proud to devote their time and energy to worthy causes.

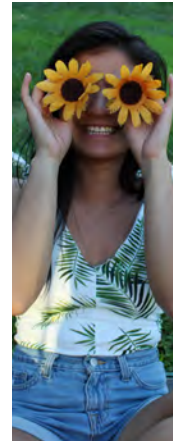
Scholarship

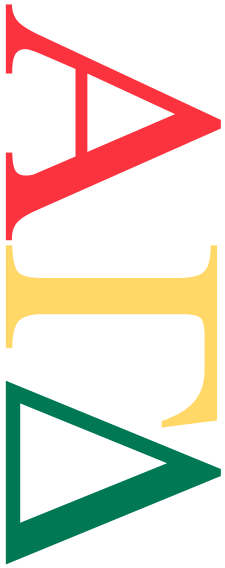
Each chapter strives for academic excellence for all of its members. Sororities engage members in mentoring programs, incentive programs, and minimum GPA requirements to ensure academic success. Each year, the sorority with the highest grade-point average is awarded the President's Cup. In addition, the Panhellenic Council also recognizes outstanding chapters and individuals with awards and scholarships to encourage scholastic achievement from all sorority women.

Inclusion

Sorority life at Truman is all about finding women who can uplift you. One way we uplift each other in the Panhellenic community is through inclusion and diversity. We strive to offer our members an experience that allows them to be celebrated for who they are, including but not limited to: race, ethnicity, national origin, sexual orientation, gender identity or expression, religion, disability, mental or physical illness, socio-economic status or any other characteristic. We endeavor to treat every member of Greek life at Truman equally through respect, acceptance and connection. We encourage our Panhellenic community to engage in dialogue on important topics such as diversity, privilege, cultural appropriation, cultural competency and inclusivity. We know that upholding the ideals of a Panhellenic woman starts with upholding a strong inclusive and accepting attitude, and we are here to foster a community of unity and diversity.

The average sorority woman's cumulative is 3.36, which is higher than the campus average.





Alpha Gamma Delta

International Sorority

Chapter Epsilon Omega

Values Alpha Gamma Delta is an international women's fraternity that promotes academic excellence, philanthropic giving, ongoing leadership and personal development and above all, a spirit of loving sisterhood.

Founded Syracuse University; Syracuse, New York; May 30, 1904

Flower Red and Buff Roses with Green Plumosa Fern

Colors Red, Buff and Green

Mascot Squirrel

Philanthropies The Alpha Gamma Delta Foundation (Fighting Hunger in partnership with Meals on Wheels and Feeding America), The 'I Think I Can' Foundation

Motto ***Loving, Leading, Lasting***







Alpha Sigma Alpha

National Sorority

Alpha Beta

Chapter **Sisterhood:** forming strong bonds of unconditional friendship based on common values and experiences

Values **Heritage:** expressed through creed, ritual and history

Leadership and Service: enhanced by chapter, campus and community involvement

Founded Longwood College; Farmville, Virginia;
November 15, 1901

Flower Narcissus and Aster

Colors Pearl White and Crimson

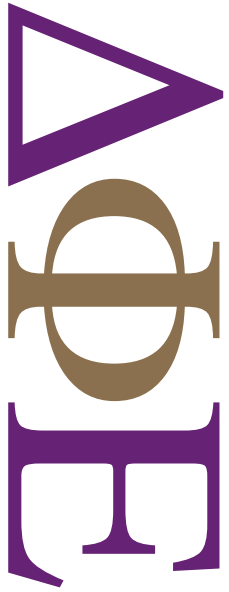
Mascot Lady bug

Philanthropies Special Olympics, S. June Smith Center, Girls on the Run, DOT Days, Puppy Love for Tally

Motto **Aspire, Seek, Attain**







Delta Phi Epsilon

International Sorority

Chapter Zeta Beta

Values Delta Phi Epsilon develops a social consciousness and a commitment to think and act for the greater good. We assure continuous development and achievement for women by embracing our founding principles of justice, sisterhood, and love.

Founded New York University Law School; Manhattan, New York; March 17, 1917

Flower Lovely Purple Iris

Colors Royal Purple and Pure Gold

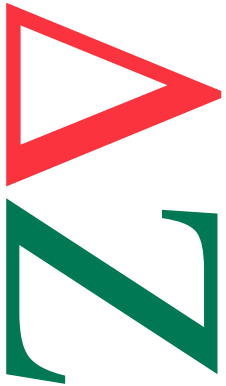
Mascot Unicorn

Philanthropies Cystic Fibrosis Foundation, National Association of Anorexia Nervosa and Associated Disorders (ANAD), & Delta Phi Epsilon Education Foundation

Motto ***Esse Quam Videri: To Be Rather Than To Seem To Be***







Delta Zeta

International Sorority

Chapter Delta Sigma

Values The purpose of this sorority shall be to unite its members in the bonds of sincere and lasting friendship, to stimulate one another in the pursuit of knowledge, to promote the moral and social culture of its members, and to develop plans for guidance and unity in action; objects worthy of the highest aim and purpose of associated effort.

Founded Miami University; Oxford, Ohio; Oct. 24, 1902

Flower Killarney Rose

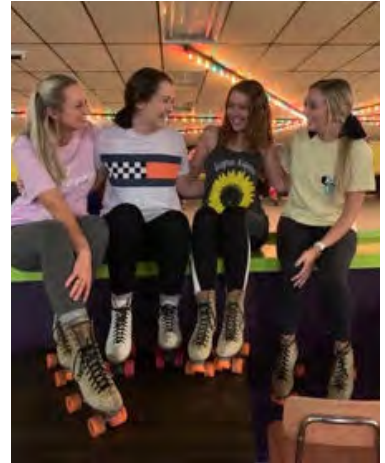
Colors Rose and Green

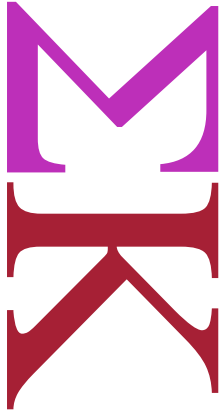
Mascot Turtle

Philanthropies Painted Turtle Camp, Starkey Hearing Foundation

Motto ***Enriching Lives that Change the World***







Sigma Kappa

National Sorority

Chapter Delta Theta

Values The values of Sigma Kappa are personal growth, friendship, service and loyalty.

Founded Colby College in Waterville, Main, Nov. 9, 1874

Flower Wild Purple Violet

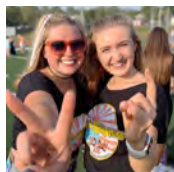
Colors Lavender and Maroon

Mascot Dove and Heart

Philanthropies Maine Seacoast Mission, Alzheimer's Research
Inherit the Earth Gerontology, Sigma Kappa
Foundation.

Motto ***One heart, one way***







Sigma Sigma Sigma

National Sorority

Chapter Mu

Values Sigma Sigma Sigma reaffirms its long standing core values of wisdom, power, faith, hope and love.

Founded Longwood College, Farmville, Virginia: April 20, 1898

Flower Purple Violet

Colors Royal Purple and Pure White

Mascot Sailboat

Philanthropies Sigma Sigma Sigma Foundation supporting Robbie Page Memorial Fund and March of Dimes

Motto ***Faithful Unto Death***





Panhellenic Council

Panhellenic Council is comprised of the six social sororities on Truman's campus. The word Panhellenic comes from the greek words "pan," meaning "all," and "hellenic," meaning "Greek." There are representatives from each sorority that serve on the council to unite all the sororities and ensure equality between them. In addition, they sponsor Circle of Sisterhood.

The six women shown above are the representatives on the Panhellenic Council known as Recruitment Team. Each of these women have disaffiliated from their own sorority to collaborate together and facilitate Formal Recruitment.



@tsu_panhellenic



@tsupanhellenic

Gamma Chi

You will be led through Formal Recruitment by your recruitment counselor, a.k.a. your Gamma Chi. Gamma Chis are sorority women who have disaffiliated from their own sororities to serve as unbiased counselors in order to help each potential new member find the sorority that fits her best. Your Gamma Chi will be available at any time to answer any question or listen to any concerns that you may have about sorority life with complete confidentiality.

Get to know the Gamma Chis on Truman's Panhellenic website at panhellenic.truman.edu.

Sign Up

Visit our website at ***Panhellenic.truman.edu*** for information about recruitment this year, including a schedule, more info about sorority life and FAQs.

Or go directly to the sign-up form at: ***<https://enroll.icsrecruiter.com/pan/truman>***

What to Wear

Thursday & Friday: Virtual Invite

Wear a nice shirt for your zoom call.

Saturday: Preference Event

Wear a nice dress, skirt or blouse. Although it is a formal day, please do not wear prom dresses or gowns

Greek Glossary

Alumnae: Members of a sorority who have graduated

Active Member: An initiated member of a sorority currently in college

Bid: An invitation to membership

Chapter: A branch of a national sorority, established on campus

Disaffiliation: When a Greek woman temporarily separates herself from her own sorority in order to lead and assist the potential members during formal membership recruitment

Infraction: Filed when a sorority violates the recruitment specific rules and regulations.

Initiation: The ceremony at which a promised member becomes an active or initiated woman

Legacy: The daughter or sister of (or in some groups step-daughter, step-sister, or granddaughter) of an initiated member

Local Sorority: A sorority located on one campus that does not have affiliation with a national fraternity for women
Philanthropy: A charity or fundraiser that the sorority supports, locally or nationally

Potential New Member (PNM): Female student who is participating in formal membership recruitment

Greek Alphabet

A Alpha	N Nu
B Beta	Ξ Xi
Γ Gamma	O Omicron
Δ Delta	Π Pi
E Epsilon	P Rho
Z Zeta	Σ Sigma
H Eta	T Tau
Θ Theta	Υ Upsilon
I Iota	Φ Phi
K Kappa	X Chi
Λ Lambda	Ψ Psi
M Mu	Ω Omega

New Member: An individual who has joined a sorority but has not yet been initiated

Strict Silence: The time between the last preference event and yell-in during which a potential member may not have any contact with an active member

Yell-in: The traditional close to formal membership recruitment where potential members learn the sorority affiliation of their Gamma Chi and meet their new sorority sisters

Dirty Rushing: When one organization will attempt to influence a potential new member through methods that are against the rules. If you feel you have experienced any of the following examples or anything else that makes you feel uncomfortable, please notify one of the Recruitment Team members as soon as possible. Examples of dirty rushing include:

- A sorority speaks about another sorority (or sororities) in a negative way to a potential new member.
- Sorority members call you on the phone or hang out with you outside of the Formal Membership Recruitment events.
- Alumnae or active members call you during the summer or during formal recruitment to recruit PNMs.
- You are given a gift or other item to keep during a formal recruitment event.
- You are promised a bid by a sorority.
- You are persuaded to decline or accept a recruitment party invitation by any sorority member.



TAKE ROOT

People. Planet. Community.

**Visit us Tues-Sat
11am-8pm**

Farm-to-table cuisine
on the downtown
square of Kirksville

takerootcafe.org

(660)627-7287

Discount Textbooks

Tony Lain, Store Manager
101 East Filmore Street Kirksville, MO 63501
discounttextbookstu@gmail.com

 **Reo's Rides**
We don't work on motorcycles we **FIX THEM!**
1102 South Baltimore Street
Kirksville, MO 63501

Reo Haynes
Manager
660.730.5101
reosrides@gmail.com
Like us on Facebook @ Reo's Rides



GRINDERS
PIZZA
SALADS
WINGS
FRIES
*And
More*

Bellacino's

Pizza & Grinders

**ORDER NOW
THANK US LATER!**

516 N. Baltimore St. Ste. C, Kirksville, MO
order at
WWW.BELLACINOS.COM
(660) 665-7665

116 S. Franklin St.
Kirksville, MO 63501



CAFFIEND *Fix* COFFEE

660-988-4878

Blossom Shop

Flowers Gifts

Tuxedos • Event Planning & Rentals

Order Online 24/7
www.blossomshopkirksville.com



1103 N. Green St. (660) 665-1505



660.665.5335

Full Service
Banquet Hall
Pro Shop
Driving Range



Patagonia • The North Face • Kendra Scott • Simply Southern • Hey Dude & More

GLIK'S

2114 South Baltimore St
Kirkville, MO 63501
660.665.6335



LAKE SIDE

- DINING -
MARINA & CABINS

Hidden Treasures
"Where you'll always find a treasure"

Sherry Stacey
Owner

104 W. Harrison
Kirkville, MO 63501
NE Corner of the KV Square
(660)665-0011

MAXWELL'S
Casual Dining



**Downtown
Kirkville**

Heritage House Rentals

215 W. Jefferson
Kirkville, MO 63501
660-665-2787
HERITAGEHOUSERENTALSLLC.COM
manager@heritagehouserentalsllc.com



OFF CAMPUS RENTALS

Voted #1 Rental Company



- ♦ Excellent 24/7 Maintenance
- ♦ Walking Distance to Campus
- ♦ Pet Friendly
- ♦ Clean
- ♦ Well Maintained Units
- ♦ Lawn Care
- ♦ Snow Removal
- ♦ Pest Control

IS



WOODY'S TIRE



AUTO & TOWING, LLC

Road Service
Lock Outs
Alignments

Wheel Balancing
Shocks
Brakes

1102 North Green • Kirkville

660-665-8617 after hours 660-216-3123



BREAKFAST • LUNCH • DINNER

2700 S. Baltimore St.
Kirkville, MO 63501
(660) 665-6300
Carry Outs Available



COLTON'S

Steak House & Grill

Ewenique
STITCHES

210 N. Franklin Street | (660) 665-3666 | M-F 12:00 - 5:30



ΑΓΑ ΑΣΑ ΔΖ ΔΦΕ ΣΚ ΣΣΣ

Welcome to Greek Life!

210 N. Franklin Street | (660) 665-3666 | M-F 12:00 - 5:30

20%

OFF YOUR FIRST
PURCHASE OF
GREEK LETTERS



Expires:
Sept. 30,
2021

#WannaShack?

2021 Wait List

**BIG GROUPS
SECURE YOUR
SPOT NOW!**

NOW OPEN

for **OFF CAMPUS HOUSING!**

660.665.8100 ~ RentInKirksville.com

VICKI BENSON



OWNER/BROKER

PROPERTIES

2020 Recruitment Schedule

September

Monday, 7

Panhellenic Welcome/Meet the Gamma Chis
6-8 PM, Georgian Room, SUB

Open Videos, 7-10 PM, Georgian Room, SUB

Thursday, 10

Gamma Chis reach out to pnms to let them know what invites they will be attending also give them a schedule for invite events

Invite Events

- Round 1: 5-5:40 p.m.
- Round 2: 5:55-6:35 p.m.
- Round 3: 6:50-7:30 p.m.

Friday, 11

Invite Events

- Round 4: 5-5:40 p.m.
- Round 5: 5:55-6:35 p.m.
- Round 6: 6:50-7:30 p.m.

Saturday, 12

Gamma Chis call pnms & give them their pref schedule (girls that decide to do a virtual pref will be called first)

Pref - 4

- Virtual Round 1: 10-10:55
- Virtual Round 2: 11:10-12:05
- **This is for girls who decide to do all of their classes online/not come to campus or girls who are uncomfortable having pref in person*
- Round 1: 1-2:10 p.m.
- Round 2: 3-4:10 p.m.
- Round 3: 5-6:10 p.m.
- Round 4: 7-8:10 p.m.
- Panhellenic Closing: 8:30 p.m.

Sunday, 13

Bid Day